

TEMPORARY ROUNDABOUT

County Highway 19 (Woodbury Drive)

Mobility and Safety Project

- » SAFETY
- » OPERATIONS
- » FAMILIARITY

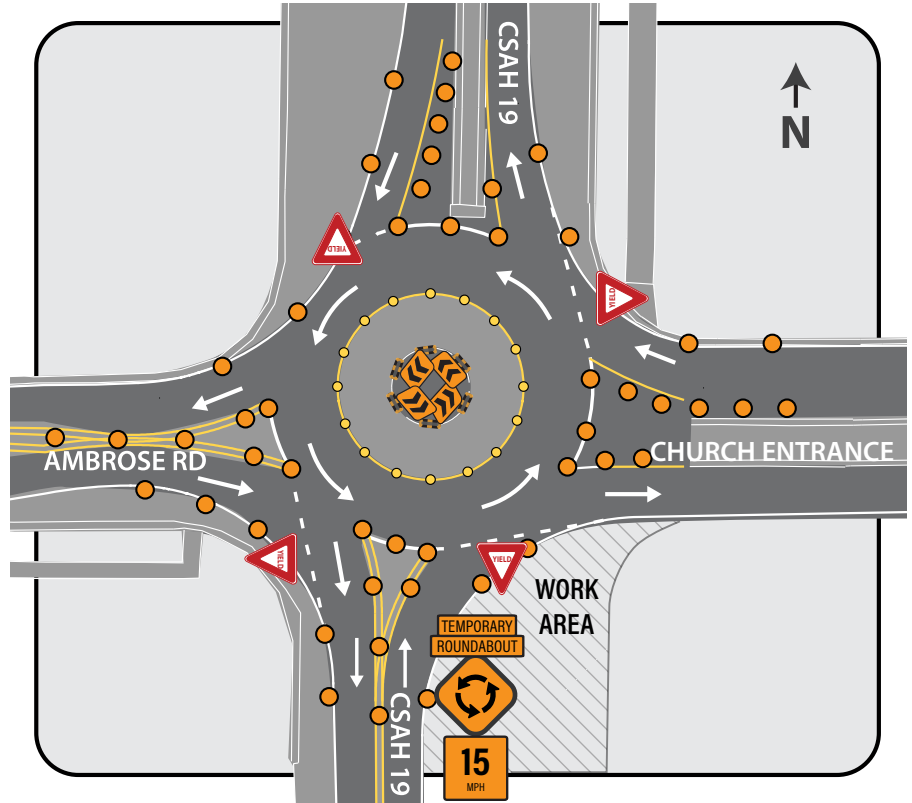
The intersection of Ambrose Rd and County Highway 19 is where traffic will shift from west to the east side of the highway to allow for construction. This shift will cause sight line barriers for traffic turning onto County Highway 19 from Ambrose Road and the church entrance.

Providing a temporary roundabout will benefit drivers by allowing for the side street traffic to safely navigate the intersection, while also controlling speeds and maintaining traffic on County Highway 19.

There are multiple existing roundabouts within 3 miles of the temporary roundabout, so the residents in the area are familiar with roundabout operations.

MORE INFORMATION

To sign up for the project mailing list and to see more information about the project, including upcoming closures, detour routes, and final design please visit the project's website located at the bottom of the flyer.



Example of temporary roundabout