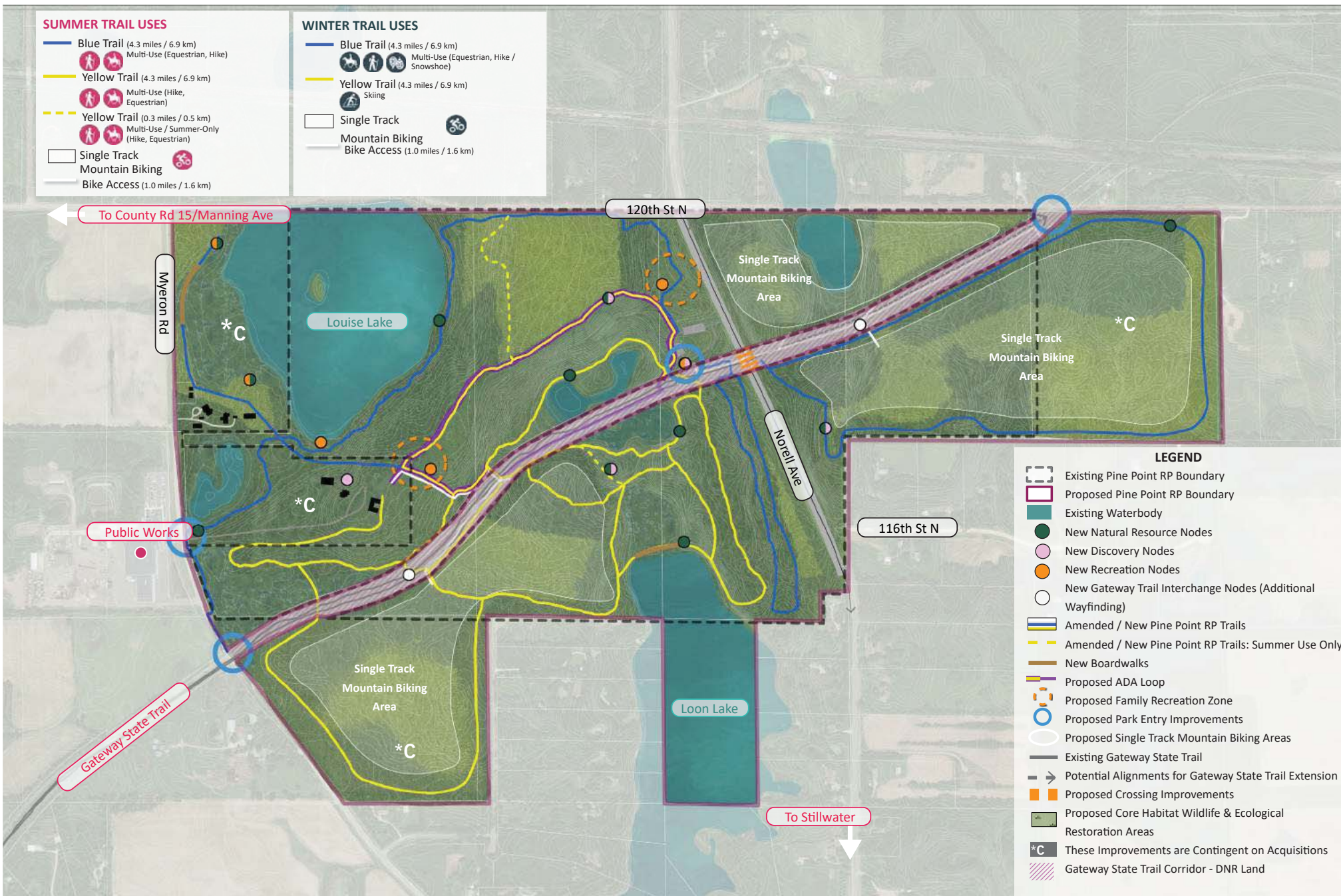


SUMMER TRAIL USES

- Blue Trail (4.3 miles / 6.9 km)
Multi-Use (Equestrian, Hike)
- Yellow Trail (4.3 miles / 6.9 km)
Multi-Use (Hike, Equestrian)
- - - Yellow Trail (0.3 miles / 0.5 km)
Multi-Use / Summer-Only (Hike, Equestrian)
- Single Track Mountain Biking
- Bike Access (1.0 miles / 1.6 km)

WINTER TRAIL USES

- Blue Trail (4.3 miles / 6.9 km)
Multi-Use (Equestrian, Hike / Snowshoe)
- Yellow Trail (4.3 miles / 6.9 km)
Skiing
- Single Track Mountain Biking
- Bike Access (1.0 miles / 1.6 km)



- LEGEND**
- Existing Pine Point RP Boundary
 - Proposed Pine Point RP Boundary
 - Existing Waterbody
 - New Natural Resource Nodes
 - New Discovery Nodes
 - New Recreation Nodes
 - New Gateway Trail Interchange Nodes (Additional Wayfinding)
 - Amended / New Pine Point RP Trails
 - Amended / New Pine Point RP Trails: Summer Use Only
 - New Boardwalks
 - Proposed ADA Loop
 - Proposed Family Recreation Zone
 - Proposed Park Entry Improvements
 - Proposed Single Track Mountain Biking Areas
 - Existing Gateway State Trail
 - Potential Alignments for Gateway State Trail Extension
 - Proposed Crossing Improvements
 - Proposed Core Habitat Wildlife & Ecological Restoration Areas
 - *C These Improvements are Contingent on Acquisitions
 - Gateway State Trail Corridor - DNR Land