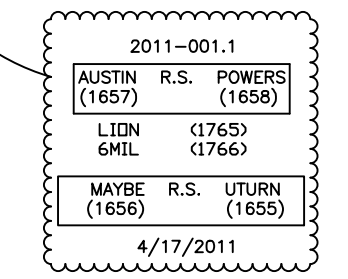
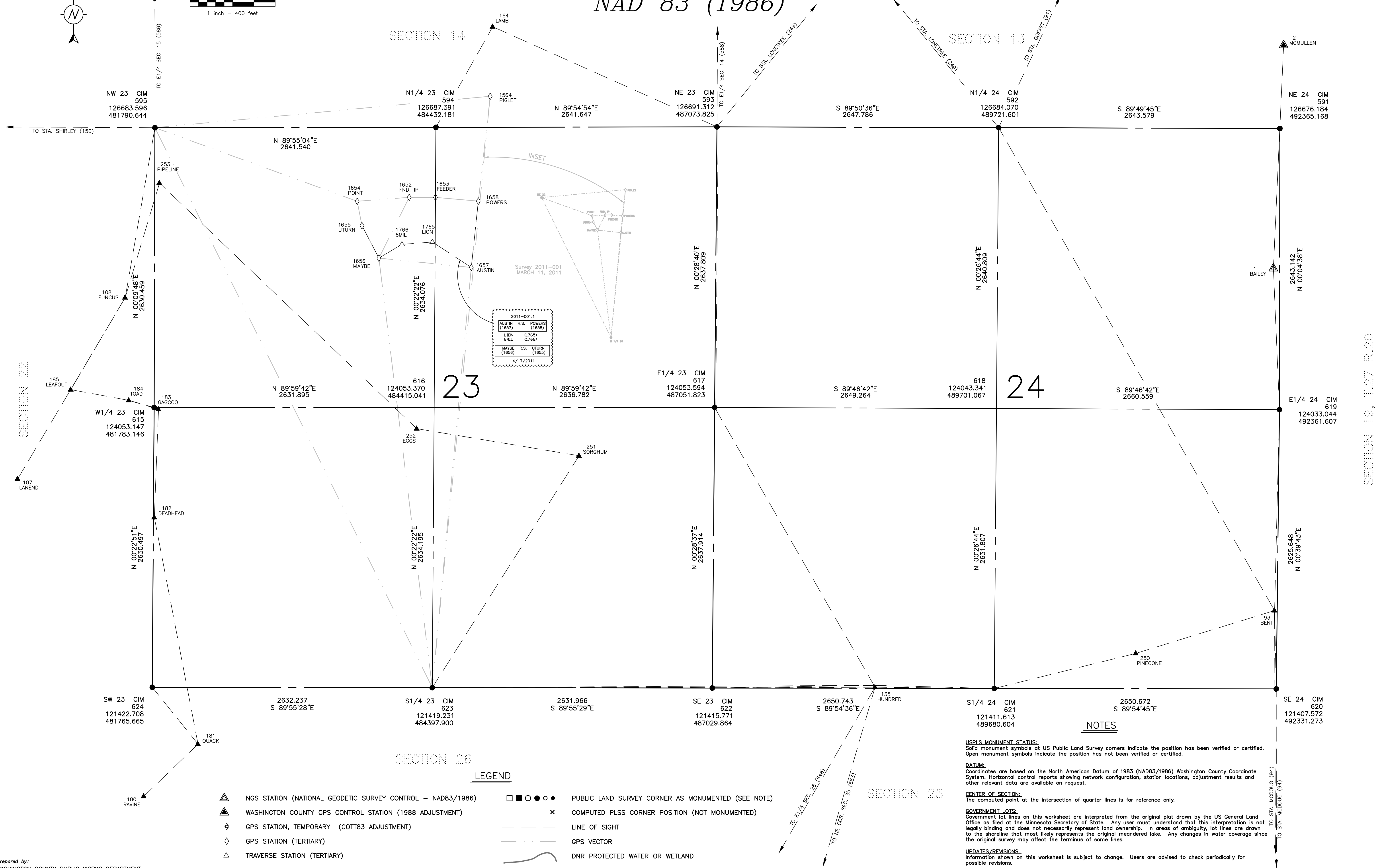
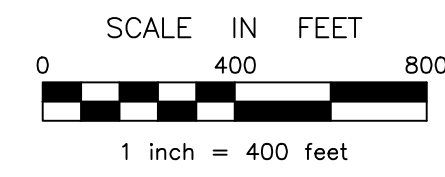
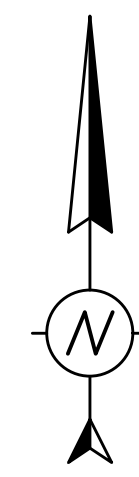


SECTIONS 23 and 24, T. 27 N., R. 21 W.

WASHINGTON COUNTY COORDINATE SYSTEM NAD 83 (1986)

DRAWN:	DATE	BY	DESCRIPTION
REVISOR:	4-19-95	JLB	ADDED SURVEYS 2011-001 & 2011-001.1
REVISOR:	3-27-13	RPO	
REVISOR:			
REVISOR:			



- LEGEND**
- ▲ NGS STATION (NATIONAL GEODETIC SURVEY CONTROL - NAD83/1986)
 - ▲ WASHINGTON COUNTY GPS CONTROL STATION (1988 ADJUSTMENT)
 - ◇ GPS STATION, TEMPORARY (COTT83 ADJUSTMENT)
 - ◇ GPS STATION (TERTIARY)
 - △ TRAVERSE STATION (TERTIARY)
 - ■ ○ ● ● PUBLIC LAND SURVEY CORNER AS MONUMENTED (SEE NOTE)
 - × COMPUTED PLSS CORNER POSITION (NOT MONUMENTED)
 - LINE OF SIGHT
 - - - GPS VECTOR
 - ~ DNR PROTECTED WATER OR WETLAND

NOTES

USPLS MONUMENT STATUS:
Solid monument symbols at US Public Land Survey corners indicate the position has been verified or certified. Open monument symbols indicate the position has not been verified or certified.

DATUM:
Coordinates are based on the North American Datum of 1983 (NAD83/1986) Washington County Coordinate System. Horizontal control reports showing network configuration, station locations, adjustment results and other relevant data are available on request.

CENTER OF SECTION:
The computed point at the intersection of quarter lines is for reference only.

GOVERNMENT LOTS:
Government lot lines on this worksheet are interpreted from the original plot drawn by the US General Land Office as filed at the Minnesota Secretary of State. Any user must understand that this interpretation is not legally binding and does not necessarily represent land ownership. In areas of ambiguity, lot lines are drawn to the shoreline that most likely represents the original meandered lake. Any changes in water coverage since the original survey may affect the terminus of some lines.

UPDATES/REVISIONS:
Information shown on this worksheet is subject to change. Users are advised to check periodically for possible revisions.

prepared by:
WASHINGTON COUNTY PUBLIC WORKS DEPARTMENT
SURVEY DIVISION
11680 Myron Rd. N.
STILLWATER, MINNESOTA 55082
PHONE (651) 430-4300